

BAKER

Products



Baker AN-20 / AN-24 Planer User Manual

Ellington Industrial Supply, Inc.

P. O. Box 128

Ellington, Missouri 63638 USA

Web site: www.baker-online.com E-mail: info@baker-online.com

Phone: (573) 663 – 7711 Fax: (573) 663 – 2787



Table of Contents

Warranty	3
Defective Parts	4
Service Policy	4
Rules for Safe Operation	5
Safety Expectations for Operating Power Equipment	5
Control of Hazardous Energy (Lockout / Tagout)	6
Planer Safety Instructions	7-8
Machine Specifications	9
Receiving	10
Installation	10
Dust and Chip Removal	10
Inspection	10
Before Operating	10
Lubrication	10
Planer Table	11
Table Rollers	12
Infeed Rollers	12
Out feed Roller	13
Chip Breaker	13
Pressure Bar	14
Test Cutting	15
Helical Cutter Head Knives	15
Parts List	16-17



Warranty

Ellington Industrial Supply, Inc. machinery is warranted against defects in material or workmanship starting from the date of shipment from the manufacturing plant.

This warranty is given solely to the "original purchaser" of the equipment and is in no way to be expressed or implied that it is transferable to any other parties without the written consent and approval from the CEO or Sales Manager of Baker Products.

Our one (1) year warranty period covers all items built at our manufacturing facilities including structural frame, cowlings, doors, shafting, dust chutes and guards.

We honor six (6) months of warranty coverage for miscellaneous vendor-purchased-supplied items including bearings, chain, sprockets, hydraulic components, etc.

Ninety (90) days of warranty coverage is provided on all electrical parts. All electrical components and wiring has been installed in accordance with the National Electrical Code (NEC) of the United States of America.

Ellington Industrial Supply, Inc. does not warranty this machine to meet any other requirements or jurisdiction of any electrical or safety codes of any other state, municipality, other country or jurisdiction. The purchaser assumes all risk and liability whatsoever resulting from the use thereof whether used singularly or in conjunction with other machinery or apparatus, including, but not limited to, all matters resulting from sawdust generation.

Note: *No warranty is provided on any electrical components or parts if equipment is powered or connected to a roto-phase electrical converter in order to create a three phase power supply for operational current from a single phase source.*

Any change in materials, design, or performance intended to improve any product of Ellington Industrial Supply, Inc. shall not obligate Ellington Industrial Supply, Inc. to modify any previously manufactured equipment.

This manual may contain details that if not properly followed can affect the performance of your equipment. You are responsible for proper use and maintenance of your equipment and we reserve the right to deny warranty work if deemed to be caused by a lack of proper maintenance or negligence by the owner or any of their employees.



Defective Parts

Parts claimed defective must be returned freight prepaid, to our plant in Ellington, Missouri. Any part determined defective due to faulty workmanship or materials will be replaced or repaired (at our option) free of charge, F.O.B. our plant. This warranty does not cover expendable items (i.e. drive belts, band wheels, conveyor belting, blades, cutters, guides, etc.). Except as expressly provided herein, this warranty is in lieu of all other warranties, expressed or implied, including a warranty of merchantability or fitness for a particular purpose. This warranty is "void" if any part of the unit has been tampered with, modified, altered, or operated with parts other than supplied or recommended by Ellington Industrial Supply, Inc. In no event shall Ellington Industrial Supply, Inc. be liable for special, indirect, incidental or consequential damages, however arising, including but not limited to, the loss of earnings or the cost of downtime.

Service Policy

In the event that you have any problems, call us at (573) 663-7711 any time between 8:00 AM and 5:00 PM (CST), Monday through Friday. A member of our trained staff will answer any questions you may have. We charge nothing for this service.

The only charge is for replacement parts not covered by warranty or after our inspection we deem that the problem is due to operator error or lack of proper maintenance or neglect.





If it is necessary for a member of our service department to visit your plant at your request, there will be a charge for this service. Call our service department for current prices.

Retain this Information for your Records

Model Number:
Serial Number:
Date of Purchase:
Power Source:.....
Dust Removal:

Rules for Safe Operation

The purpose of safety symbols and signage is to draw your attention to real or possible hazardous conditions that may exist when operating this equipment. Please remember that safety symbols and signage alone do not eliminate danger and are not substitute for proper training and education regarding operational hazards.

	This symbol and warning indicates a potentially hazardous situation, which, if not avoided, <u>will</u> result in death or serious injury.
	This symbol and warning indicates a potentially hazardous situation, which, if not avoided, <u>could</u> result in death or serious injury.
	This symbol and warning indicates a potentially hazardous situation, which, if not avoided, <u>may</u> result in minor or moderate injury.
	This warning provides notice and instruction regarding a potentially hazardous situation, which, if not avoided <u>will</u> result in serious injury or death.

SAFETY EXPECTATIONS FOR OPERATING POWER EQUIPMENT

ALWAYS...

- ENSURE THAT TRAINED PERSONNEL OPERATE, MAINTAIN AND REPAIR THIS EQUIPMENT
- **TURN POWER OFF AND LOCKOUT / TAGOUT PRIOR TO PERFORMING MAINTENANCE**
- KEEP WORK AREA CLEAN AND WELL LIGHTED TO MINIMIZE OR ELIMINATE HAZARDS
- KEEP CHILDREN AND VISITORS AWAY FROM OPERATING EQUIPMENT
- OPERATE THE EQUIPMENT AT THE RATE IT WAS DESIGNED FOR
- KEEP GUARDS IN PLACE WHEN OPERATING EQUIPMENT
- REMOVE TOOLS BEFORE RESUMING OPERATION
- USE PROPER EXTENSION CORD
- WEAR PROPER APPAREL AND AVOID LOOSE CLOTHING AND ACCESSORIES THAT COULD GET CAUGHT IN MOVING PARTS
- ALWAYS WEAR SAFETY GLASSES AND HEARING PROTECTION
- AVOID "KICK-BACK" BY KNOWING WHAT CONDITIONS CAN CREATE IT
- CHECK DAMAGED PARTS AND REPAIR OR REPLACE THEM IMMEDIATELY

NEVER...

- LEAVE MACHINERY RUNNING OR UNATTENDED, ALWAYS TURN POWER OFF
- OPERATE EQUIPMENT WHEN TIRED, FATIGUED OR UNDER THE INFLUENCE OF DRUGS OR ALCOHOL
- ALLOW UNTRAINED PERSONNEL TO OPERATE, MAINTAIN OR REPAIR THIS EQUIPMENT

No list of safety expectations can ever be complete as every work environment is as different as are the people operating the equipment.

Always keep safety as your highest priority and always use this machine with caution and respect.

Control of Hazardous Energy – (Lockout / Tagout)

Lockout / Tagout (LOTO) refers to specific practices and procedures to safeguard employees from the unexpected energy, startup of machinery/equipment, or the release of hazardous energy during service or maintenance activities.

This requires that a designated individual turn off and disconnect the machinery/equipment from its energy source(s) before performing service or maintenance and that the authorized employee(s) lock and tag the energy-isolating device(s) to prevent the release of hazardous energy and take steps to verify that the energy has been isolated effectively.

List of Related Terms

Affected Employee	An employee whose job requires them to operate a machine or piece of equipment on which service or maintenance is being performed.
Authorized Employee	A person who locks or implements a tagout system procedure on machines or equipment to perform service or maintenance on that machine or equipment. An authorized employee and an affected employee may be the same person when the affected employee's duties also include performing service or maintenance.
Energy Source	Any source of electrical, mechanical, hydraulic, pneumatic, chemical, thermal, or other energy.
Lockout	The placement of a lockout device (such as a lock) on an energy-isolating device, in accordance with an established procedure that ensures the device and the equipment cannot be operated until the lockout device is removed.
Servicing and / or Maintenance	Workplace activities such as constructing, installing, setting up, adjusting, inspecting, modifying, maintaining or servicing machines or equipment. These activities include lubrication, cleaning or un-jamming of machines or equipment, and making adjustments or tool changes where the employee may be exposed to the unexpected energy, start-up of equipment or release of hazardous energy.
Tagout	The placement of a tagout device (such as a tag) on an energy-isolating device, in accordance with an established procedure that ensures the device and the equipment may not be operated until the tagout device is removed.

Example of lockout tags, lockout hasp and keyed lock



The Fatal Five Main Causes of Lockout/Tagout Injuries

1. ***Failure to stop equipment***
2. ***Failure to disconnect from a power source***
3. ***Failure to dissipate (bleed, neutralize) residual energy***
4. ***Accidental re-starting of equipment***
5. ***Failure to clear work areas before re-starting***



Planer Safety Instructions

Read this instruction manual thoroughly before operating the machine. Be sure and understand the limitation and dangers that may occur during the operation of the machine.

Only allow authorized persons who have been properly trained to operate the machine.

Insure that the machine is properly connected to the power supply.

NOTE: Only a licensed electrician should install this machine.

Before the power supply is connected, be sure that all switches are in the off position.

Disconnect the electrical power before installing knives, heads or performing routine maintenance on the machine. Inspect the machine or change parts only when the machine is turned off.

Operate the machine only with all the safety guards and covers properly installed.

Be sure cutterhead rotates under power in a counterclockwise direction when viewed from the main drive motor side.

Make all machine adjustments with power off, except for setting the feed speed rate.

Never leave the machine operating unattended. When shutting the machine down, remain near the machine until all motion stops.

Keep the machine free from sawdust buildup - especially build up of sawdust around the motors.

Make certain that machine frame is electrically grounded and that a grounding lead is included in the incoming electrical service. In cases where a cord and used, make certain that grounding lug connects to a suitable ground.

Keep the floor around the machine clean and free of scrap material, sawdust, oil or grease to minimize the danger of tripping or slipping. Ensure the table is free of all scrap, foreign material and tools before starting a cut.

Before operating the machine, remove, tie, watch and other jewelry and roll up sleeves above the elbows. Remove all loose clothing and confine long hair.

Always wear protective type footwear and hearing protection. Do not wear gloves.

Wear an approved safety shield, goggles, or glasses to protect eyes when operating the planer.

Keep hands outside the machine and never reach under the guards to try to clear stock that stops feeding. Do not clear chips and sawdust with hand, use an air hose or hand brush.

Do not let on lookers come in contact with machine or incoming source power at any time.

Operator should stand to the side and out of line with the table during operation.



Keep tools sharp and clean for safest and best performance. Dull tools increase noise level and can cause kickbacks. A cutterhead that is not securely locked in place can be thrown out of the planer causing severe or fatal injury as well as damage to the machine. Do not use knives that have been reground to less 3/4"(19mm) height on standard cutterhead.

Do not make any cuts requiring more power than available on the machine.

Do not attempt to feed two boards side by side on any machine not equipped with a sectionalized infeed roller and chip breaker.

Do not planer boards with loose knots or with nails or any foreign material on the surface. Knife impact on these objects can cause the knives to be pulled out and cause them to shatter against the chip breaker or pressure bar.

Do not feed stacked board through a planer as kickback can occur causing sever or fatal injury.

Do not attempt to plane boards shorter than 10" (250mm) in length without butting aboard of equal thickness behind it to help it through the planer. Be sure the last board of a butted sequence is 10" (250mm) long or longer.

If the board being planed stops feeding, disengage or turn the feed off and turn the power off. Wait until the cutterhead comes to a complete stop before lowering the table to remove the board. Never lower the table with the power on and the stock still in the machine. A kickback can occur which could cause a severe or fatal injury.

Avoid accidental starting by ensuring switch is turned off when connecting power to the machine.

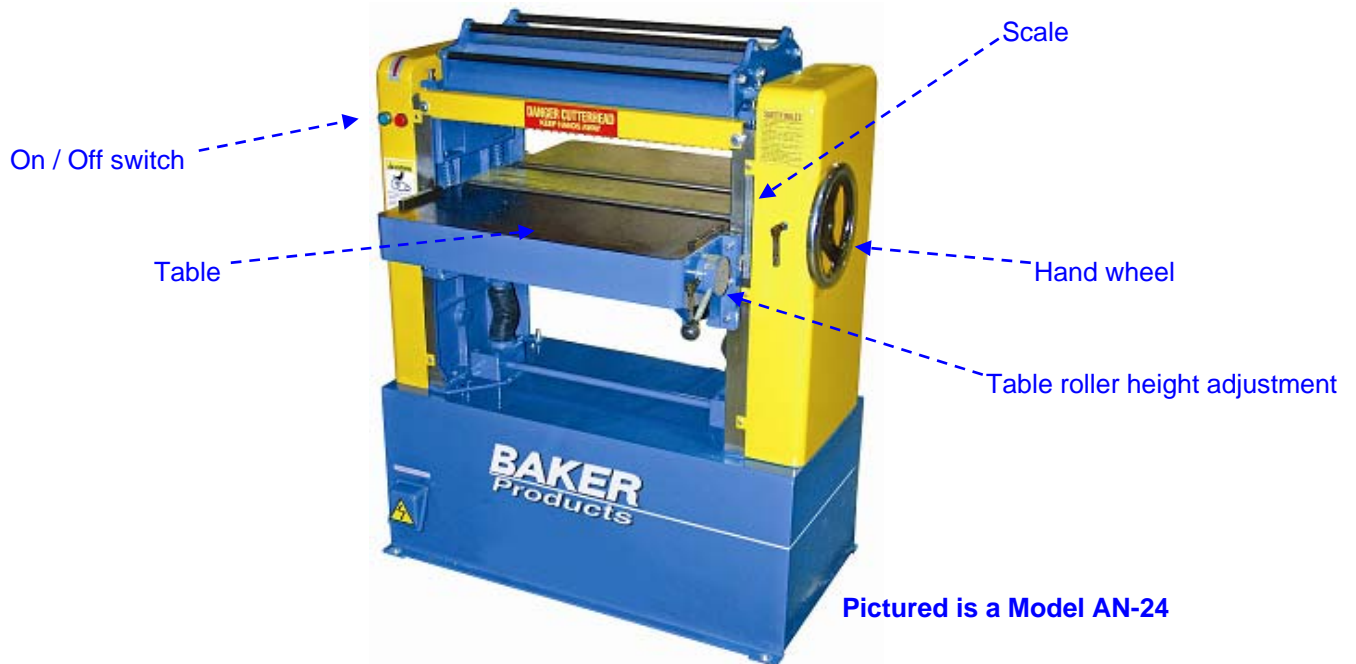
If the operator needs to leave the work area for any reason, the planer should be turned "off" and the cutterhead should come to a complete stop prior to leaving.



Machine Specifications

Subject	Model AN-20	Model AN-24
Table area	21" x 27.5" (54.6cm x 70cm)	25.4" x 28" (64.6cm x 71cm)
Cutterhead diameter	2.99" (76mm)	2.99" (76mm)
Max. cutterhead R.P.M.	5200 rpm	5200 rpm
Infeed roller diameter	2.75" (70mm)	2.75" (70mm)
Outfeed roller diameter	52mm	52mm
Bed roller diameter	55mm	55mm
Feed speed	315" / min (8m / min)	315" / min (8m / mi)
Max depth of cut single board	3/8" (10mm)	3/8" (10mm)
Stock range thickness	1/8" – 6-3/4" (3 - 170mm)	1/8" – 6-3/4" (3 - 170mm)
Widest planeable butted stock	20" (508mm)	24" (610mm)
Shortest planeable stock not butted	6" (150mm)	6" (150mm)
Motor	5hp	7.5hp
Approximate weight	728 lbs (330 kgs)	793 lbs (360 kgs)

NOTE: Do not equip your planer with a motor of higher horsepower than it is specified, nor run the cutterhead in excess of the maximum rpm specified.





Receiving

Uncrate machine and check for shipping damage. Report any damage to the carrier and your distributor immediately. If accessories were ordered with the machine, these will be in a separate container and should be checked for completeness and damage. Notify the carrier and your distributor immediately if any items are missing or damaged. Clean protective coating from all areas and lubricate parts as indicated in this manual.

Installation

Mount machine on a solid foundation, preferably a concrete floor, and lag machine to the floor through the holes provided in the base. The machine area should be clean, dry well ventilated, and well lighted. Since planer can create noise problems, the site selection should be one, which minimizes reverberant sound from walls, ceilings and other equipment. Electrical should be installed so that they are protected from damage and exposure. Be sure to properly ground the machine frame.

Dust and Chip Removal

Utilize a dust collection system of sufficient size that is rated at a minimum of 1,500 cfm.

Inspection

Before putting power on the machine, check that all screws are tight, that all mechanical functions work freely and that the cutter head turns freely without knife contact with the chip breaker or pressure bar. Periodic or regular inspections are required to insure that the machine is in proper adjustment, that all screws are tight, that belts are in good condition, that dust has not accumulated in the electrical enclosures and that there are no loose or worn electrical connections.

Before Operating

Check the motor and switch-wiring diagram for proper voltage connection before applying power to the machine. Turn the main drive motor on momentarily to check for proper direction of rotation. Correct as required. Cutter head should rotate counterclockwise when viewed from the sheave or motor side. The infeed roller should turn clockwise when from the motor side planer. Run the machine without cutting for a short period of time to check that all power function are operating properly. Be sure to read and understand the operating instruction manual using the planer.

Lubrication

The table roller, infeed roller and outfeed roller are mounted on sealed ball bearing and require no lubrication. The following table indicates the lubrication points, frequency, and recommended lubricant.

Point	Frequency	Lubricant
Cutter head housing	Daily	High speed grease
Table raise/lower slides	Weekly	SAE 10
Table elevating ball screws	Weekly	SAE 10
Forward drive gears	Weekly	SAE 10

Planer Table

The planer table is raised and lowered by three screws supported on thrust bearing and is guided by machine surface on the side panels. The fit-up to prevent the table from rocking is controlled by two gibs in front. These gibs should be adjusted individually using the gib bolts provided, so that there is light contact on all four surfaces. The gibs should be tight enough to prevent rocking or movement of the table when planer is in operation.

To do accurate planning, the table must be parallel with the cutter head. Lack of parallelism results a taper over the width of the board. Check with straddle-type knife gauge to insure knives have the same protrusion from the cutter head arc end to end that each knife is the same. Maximum deviation allowed for good planning is 0.02mm.

Place a 5" x 5" (125mm x 125mm) gauge block to be used as a feeler gauge at the extreme right hand side of the table, rotating the head so the knives clear the gauge surface.

Raise the table with the table raising hand wheel until the block just touches the cutter head. Move the block to the extreme left side of the table. Using the block, find the low point of the cutter head without moving the table height.

Note whether the reading is less than or greater than left side, if greater on the left side, the left side of the table must be lower; if less, the left side of table must be raised. With the gauge block under left side that must be raised or lower, loosen the lock screw locking the threaded flange nut from rotation in the table on the side to be raised or lowered lower.

Rotate the nut using a rod in the flange holes and adjust height of the left side. Relock the flange nut lock screw in the table.

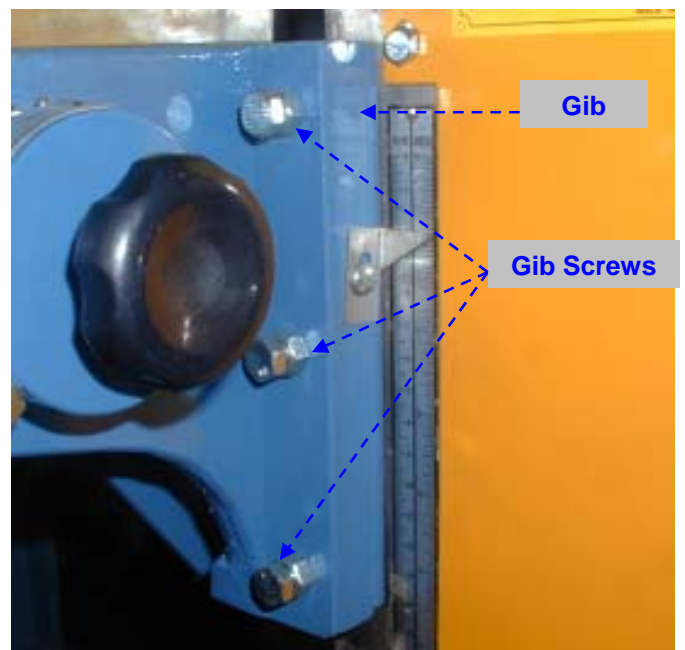
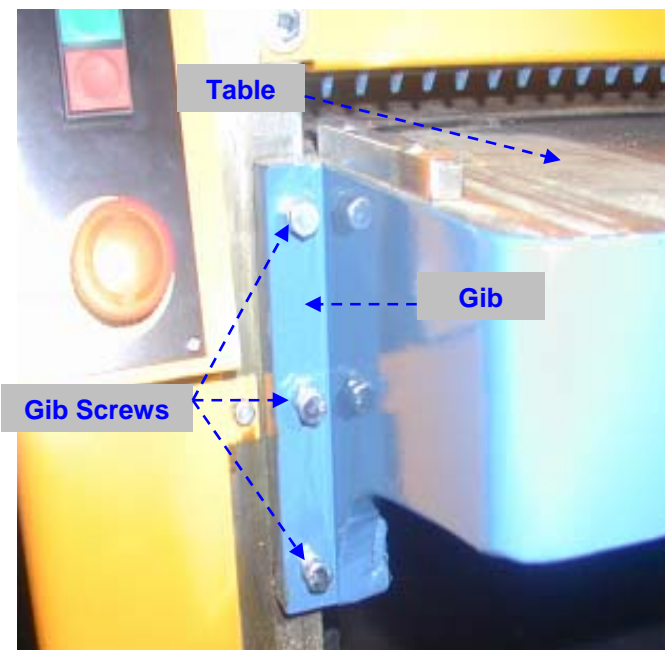
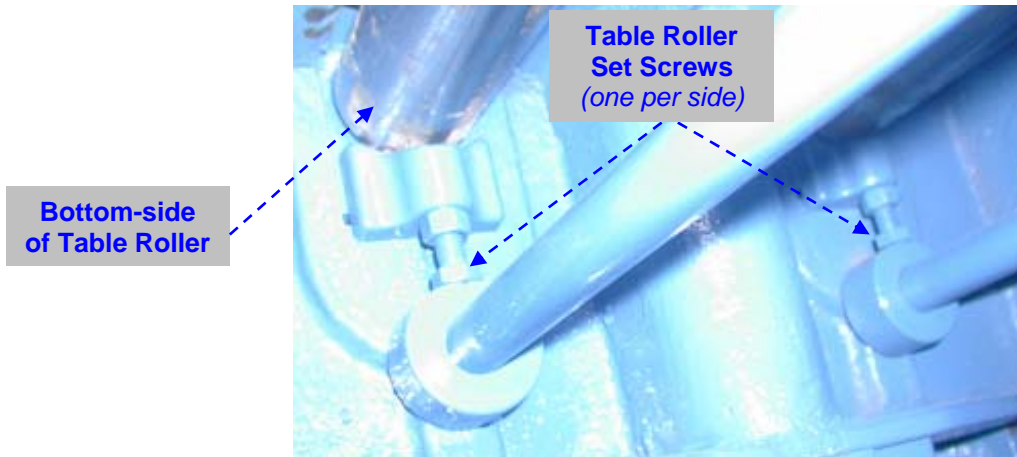


Table Rollers

Two table rollers are utilized to help reduce friction of the stock on the table as it feeds through the planer.

Zero the indicator to the table, then place a gauge over the extreme right side of table roller and find the high point of the roller arc. The standard setting is 0.5mm. If the reading is greater or less than this reading, loosen the nut, and adjust the hex head jackscrew to position the roller to the desired 0.5mm setting. Repeat the process on the left side and then recheck the right side. Relock the nuts when finished adjusting.

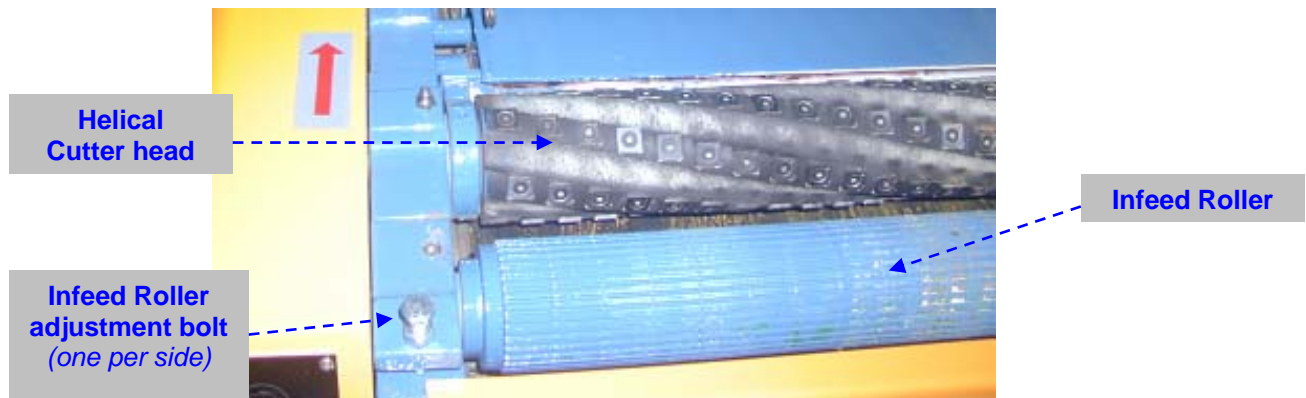


Infeed Rollers

The function of the infeed roller is to feed the material into the machine. It is a corrugated roller and when sectionalized is made up of one inch wide sections with 1/4" (6mm) movement in each section to accommodate multiple board surfacing. In addition, the whole assembly is rubber loaded to accommodate the full 1/4" (6mm) depth of cut. To provide proper drive, it should be set so that the bottom of its arc is 1.6mm below the arc of the cutter head knives.

Using a gauge block or a short piece of finished lumber notched to clear the table roller, place the gauge under the cutter head and raise the table with the table raising hand wheel. Next, rock the cutter head back and forth until it just touches the gauge/material being used. If it will not go in, the roller must be raised. If clearing, it must be lowered.

Unlock the setscrew and adjust as required so that the roller just touches. Move the gauge block to the extreme left side and adjust that side as required until the roller just touches the gauge. Recheck the right side and then lock the setscrew with the jam nuts provided.



Outfeed Roller

The outfeed roller is smooth and of one-piece construction to help avoid marring the finished surface of the material being cut. Its function is to continue to feed the material through the machine after it leaves the infeed roller. The correct free position setting is .8mm below the arc of the cutter head knives. Adjust the outfeed roller using the same procedure as used for the infeed roller.

Chip Breaker

The function of the chip breaker is to help avoid splintering out of the wood, to break chip into small pieces, to help avoid board bounce on thinner boards, to direct the flow of chip out of the machine, and to permit multiple board surfacing up to 6mm difference in thickness.

The chip breaker in its free position should be set the same height as the infeed roller. Using the same method as indicated for the infeed roller, adjust the chip breaker free position using a gauge block or short piece of finished lumber to check for proper thickness at each end. It is important that each end be close to the same height to help avoid skewing of the material as it is fed through the machine. Since the chip breaker adjusting screws contact the bearing house for the infeed roller, its adjustment should be made after the infeed roller and if the infeed roller setting is altered, the chip breaker must be readjusted.

NOTE: *A chip breaker set too low may prevent stock from feeding into the machine.*



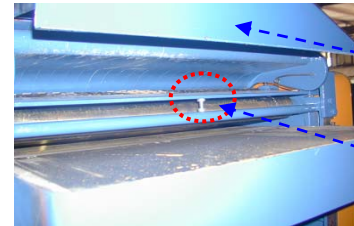
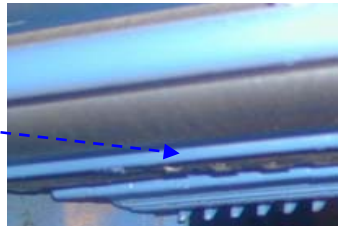
View of Chip
Breaker with
top cover open

Pressure Bar

Most planing problems can be related to improper setting of the pressure bar. Its function is to hold the material down after it passes under the cutter head and throughout the remainder of the cut. Its basic setting is to be in line with the arc of the cutter head knives. If it is too high, a shallow clip will occur in from each end of the board. If it is too low, stock will not feed through.

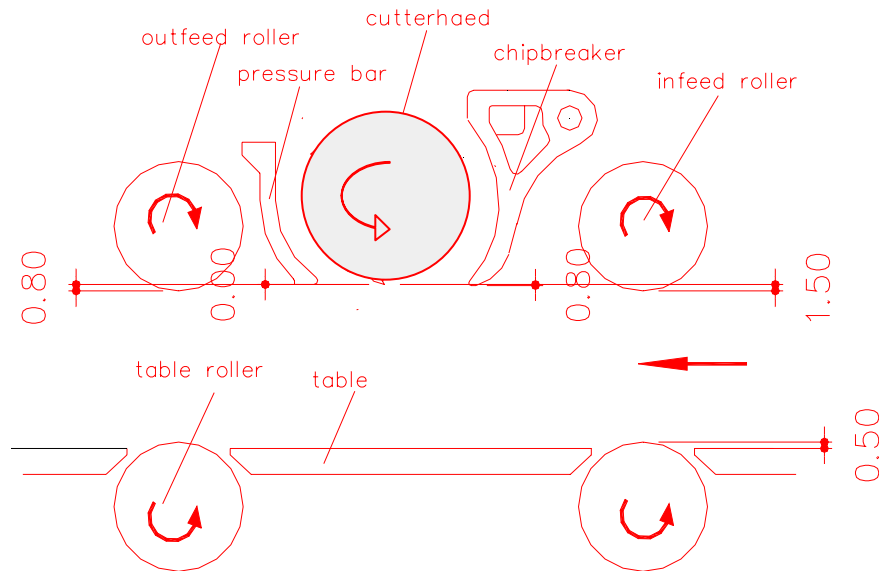
Using a gauge block, raise the table with its elevating hand wheel to determine the low point of the arc of the cutter head. Move the gauge block under the low point of the extreme right hand side of the table and adjust that end of the pressure bar with the jackscrews provided to be line with the low point of the knife arc. Recheck the right side and then check the full width of the pressure bar. If the center is slightly low, adjust both sides the same amount to bring the low point into line. Using the gauge block, set the full length of the pressure bar to be 0.02mm above the arc of the cutter head. This initial setup is starting point and final adjustment may have to be made during a test cut.

Pressure bar sits directly behind cutter head



Dust removal cover open

Pressure Bar adjustment screw



Cross section drawing of Planer components

Test Cutting

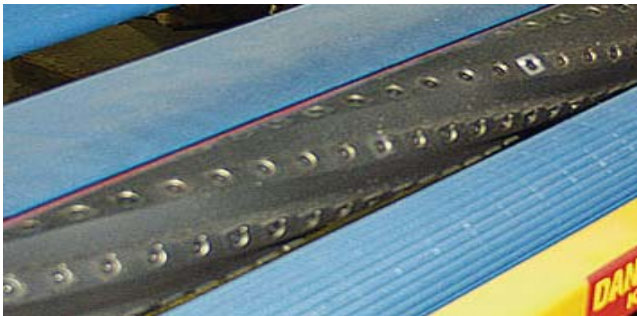
Using a piece of semi-finished stock, set up for a 1.5mm deep cut with the quick-set adjustment at zero. Start the machine, stand to the left or right hand side and begin feeding the stock into the machine.

Note: Never stand directly behind the infeed to see how the stock is feeding. A kick-back could occur resulting in serious or fatal injury.

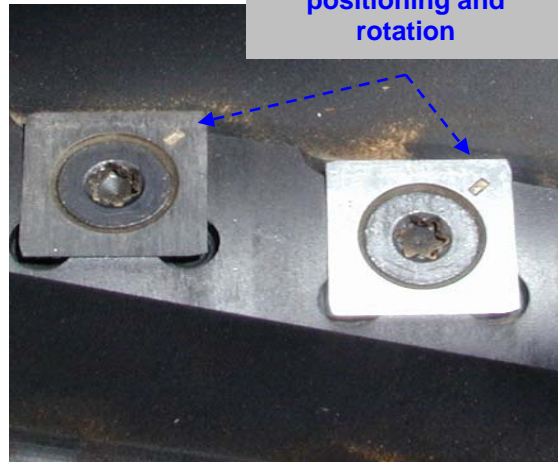
The infeed roller should take the material and force it under the chip breaker and cutter head. If the material feeds through effortlessly, examine the finished cut carefully for imperfection. Learning to read a board for imperfections will save hours in adjusting your planer to operate properly.

Helical Cutter Head Knives

Both the AN-20 and AN-24 feature helical cutter heads that reduce maintenance down time and provide an extended cutting life beyond the traditional straight knife cutters. The helical cutter heads have six (6) slots or rows of four-sided, self-seating cutter knives that are simple to rotate and change.



Helical cutter has (6) slots or rows of cutter knives



Four-sided self-seating knives have mark for consistent positioning and rotation



Parts List

ITEM	DESCRIITION	QTY
1	L.H. Panel	1
2	Hex hd. Cap.5/16**1"	3
3	Washer lock 5/16"	3
4	Plate, table rising shaft L.H.	1
5	Shaft Ring,	1
6	Bevel gear (short)14t	2
7	Shaft counter 3/4"	1
8	Base planer	1
9	Bevel gear 24t	3
10	Bracket, rising shaft	1
11	Hex hd. Cap.5/16**1"1/2	3
12	Hex hd. Cap.5/16**3/4	3
13	Bevel gear(long) 14t	1
14	Hand wheel shaft Ring, t	1
15	Hand wheel Shaft, I 7/8"	1
16	Hex hd cap 3/8**1" & washer lock	2
17	Hanger, hand wheel shaft	1
18	Hand wheel 9" dial	1
19	Handle nylon 3/8"	1
20	Feed drive panel	1
21	Hex hd. Cap. 3/8**2"1/2	4
22	Panel side R.H.	1
23	Side shaft 3/4", rear	1
24	Side shaft 5/8" front	1
25	Hex hd. Cap.5/16**1"1/4	1
26	Panel side L.H.	1
27	Bearing 6304Z	4
28	Table roller shaft	2
29	Set screw, hand wheel shaft	1

30	Table roller	2
31	Table roller bar	4
32	Hex hd. Cap 3/8**1"1/2	4
33	Thrust bearing plate	4
34	Hex hd. Cap 5/16**3/4"	2
35	Thrust bearing 2904	2
36	Table raising screw L.H	2
37	Nut table raising L.H.	1
38	Hex hd cap. 3/8**1"	4
39	Hex hd cap. 3/8**1"1/4	1
40	Lock set nut	1
41	Screw, able raising R.H.	1
42	Washer 3/8"	1
43	Nut, Table raising R.H.	1
44	Gib, table	2
45	Table	1
46	Hex hd cap. 5/16*1"1/2	6
47	Helical gear 26T out feed roller	1
48	Hex hd cap. 7/16**1"1/4	8
49	Panel scale depth 8"	1
50	Pointer table height	1
51	Housing cover ø52 R.H.	2
52	Ring S-25	2
53	Bearing 6205	4
54	Hex hd cap. 3/8**1"1/2	2
55	Housing, infeed roller L.H.	1
56	Nut 3/8"	4
57	Spring, infeed roller	2
58	Washer 3/8"	4
59	Hex head screw 3/8" x 5"	2

60	Nut ,infeed roller L.H.	1
61	Infeed roller shaft	1
62	Infeed roller	20/24
63	Rubber grain	80/96
64	Nut, infeed roller R.H.	1
65	Housing, infeed roller R.H.	1
66	Housing cover L.H.	2
67	Gear ring,	2
68	Helical gear, 38T, infeed roller	1
69	Gear Key , 1/4**1/4**L22	2
70	Bearing nut ø25	2
71	Pulley, cutter head L.H.	1
72	Housing cover, ø62	1
73	Bearing, 6206	2
74	Housing, cutter head L.H.	1
75	Pressure bar hanger	2
76	Cutter head	1
77	Housing, cutter head R.H.	1
78	Hanger, feed drive gear	1
79	Helical gear, feed drive 26t	1
80	Bearing, 6007Z	1
81	R-62	1
82	Bearing nut, ø35	1
83	Pulley, cutter head R.H.	1
84	V-belt, A-56	1
85	Sq hd scr 5/16**3/8"	36/30
86	Knife gib,	3
87	Knife 30*3*508/610	3
88	Knife spring	6
89	Spring pressure bar R.H.	1



90	Pressure bar	1
91	Spring, pressure bar L.H.	1
92	Housing, out feed roller L.H.	1
93	Spring, out feed roller	2
94	Hex hd scr 3/8"*3"1/2	2
95	Hex hd scr 3/8"*1"1/2	2
96	Out feed roller	1
97	Housing, out feed roller R.H.	1
98	Feed drive base	1
99	Bearing, 6202Z	2
100	Helical gear 13t	1
101	Gear, 80t	1
102	Bearing, 6201Z	2
103	Nut, 1/2"	2
104	Hex hd scr 3/8"*1"& wash lock	2
105	Pulley, B type	1
106	V-belt, B-37	1
107	Gear, 20t	1
108	Nut, 5/8"	1
109	Bearing, 6203Z	1
110	Nut, 3/4"	1
111	Washer, 3/4"	1
112	Pulley shaft	1
113	Bearing, 6204Z	1
114	Multi-pulley	1
115	Jaw, Chip breaker L.H.	1
116	Bracket, chip breaker L.H.	1
117	chip breaker	20/24

118	Spring, chip breaker compression	20/24
119	Hand shaft, chip breaker	1
120	Upper roller	2
121	Bracket, chip breaker R.H.	1
122	Hex hd scr 3/8"*1"	4
123	Nut,, 1/2"	6
124	Jaw, chip breaker R.H.	1
125	Hex hd scr 3/8"*1" & lock washer	4
126	Chip breaker shaft, front 3/4"	1
127	Chip breaker shaft, rear 3/4"	1
128	Hex hd scr 3/8"*2"	2
129	Front panel	1
130	Hex hd scr 5/16"*1/2"	2
131	Motor bracket, J from	1
132	Motor bracket, L from	1
133	Motor support	1
134	Set scr 5/16"*1/2"	1
135	Motor pulley	1
136	Motor key	1
137	Motor	1
138	Motor V-belt, A-53/A-54/A-55	2